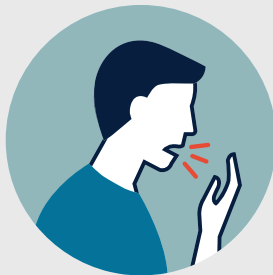


# Afraid you might have coronavirus?

**The following symptoms may appear  
2-14 days after exposure.**



**FEVER**



**COUGH**



**SHORTNESS  
OF BREATH**

**Before you arrive, call**

**has set up a designated site for evaluation and testing  
of individuals who think they might have coronavirus  
to provide the most efficient service.**



# AFRAID YOU MAY HAVE THE CORONAVIRUS?

**CALL  
IF YOU HAVE:**

**Fever, cough or difficulty breathing.**



**Been in close contact with a  
person known to have COVID-19.**



**Recently traveled from an area  
with ongoing spread of COVID-19.**



Your health care provider will work with public health to determine if you need to be tested. If you think you may have been exposed to COVID-19, call your health care provider before going to a provider's office, emergency department or urgent care.



**PATIENT VISITORS**

**will be limited to**

**NO MORE THAN**

**IN A PATIENT AREA,**

**INCLUDING**

**LABOR AND DELIVERY UNITS.**

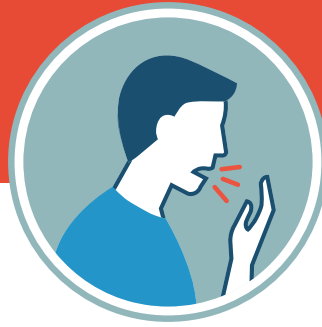


**Friends and family members  
visiting patients  
hospitalized at**

**are now limited to**

**per patient at a time.**

**This applies to all patients being cared  
for in every unit of our hospital.**



**Visitors will be restricted if they exhibit any flu-like signs or symptoms.**



**Any family member or visitor with a travel history within the last 14 days to mainland China, South Korea, Iran, Italy or other areas outlined by the CDC is not allowed to enter the hospital.**



**Any patient who is  
presumed to have or  
is being treated for  
COVID-19 will be  
limited to**



**Community service and support group activities will be evaluated on a case-by-case basis to ensure the safety of patients, volunteers and staff.**



# HOSPITAL VISITOR POLICY



**All visitors must check in at a visitor information desk.**



**No visitors under age 18 are allowed unless they are the parent of a child in the hospital.**



**Only one adult visitor per patient is allowed in all areas of the hospital.**



**Visitors may be screened for flu-like symptoms (runny nose, fever and cough) and will not be allowed to visit if symptoms are present.**



**Visitors with international travel may not visit for **14 DAYS** after arrival in the U.S.**

**We appreciate that this may be an inconvenience for patients and families. However, we made this decision in the best interest of our patients.**

**THIS ENTRANCE  
IS CLOSED**

# EFFECTIVE HANDWASHING

FOR AT LEAST 20 SECONDS



**WET HAND  
WITH WATER**



**APPLY PLENTY  
OF SOAP**



**RUB YOUR HANDS  
TOGETHER,  
PALM TO PALM**



**RUB THE BACK OF  
EACH HAND WITH  
THE PALM OF THE  
OTHER HAND WITH  
FINGERS INTERLACED**



**RUB PALM TO PALM  
WITH FINGERS  
INTERLACED**



**RUB EACH THUMB  
CLASPED WITH THE  
OPPOSITE HAND  
USING ROTATIONAL  
MOVEMENT**



**RUB THE TIPS  
OF THE FINGERS  
IN THE OPPOSITE  
PALM USING A  
CIRCULAR MOTION**



**ROTATIONALLY  
RUB WRISTS**



**RINSE YOUR HANDS  
WELL WITH WATER**



**DRY YOUR HANDS  
THOROUGHLY WITH  
A SINGLE-USE TOWEL**

# HOW TO PROTECT YOURSELF AND OTHERS FROM INFECTION



## **PRACTICE SOCIAL DISTANCING.**

Maintain at least a six-foot distance between yourself and others, especially anyone who is coughing or sneezing.



## **COUGH OR SNEEZE IN YOUR ELBOW OR IN A TISSUE, NOT YOUR HAND.**

Dispose of the used tissue immediately in a closed bin, and wash your hands with soap and water.



## **AVOID TOUCHING YOUR EYES, NOSE AND MOUTH**

without washing your hands first.



## **STAY HOME WHEN YOU ARE SICK**

except to get medical care.



## **CLEAN AND DISINFECT FREQUENTLY TOUCHED OBJECTS AND SURFACES.**



## **WASH YOUR HANDS OFTEN WITH SOAP AND WATER FOR AT LEAST 20 SECONDS.**